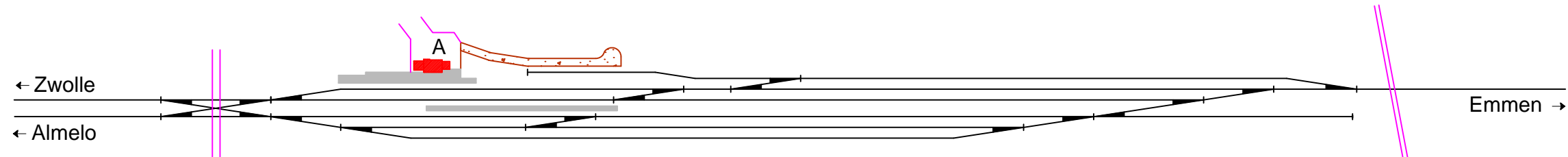
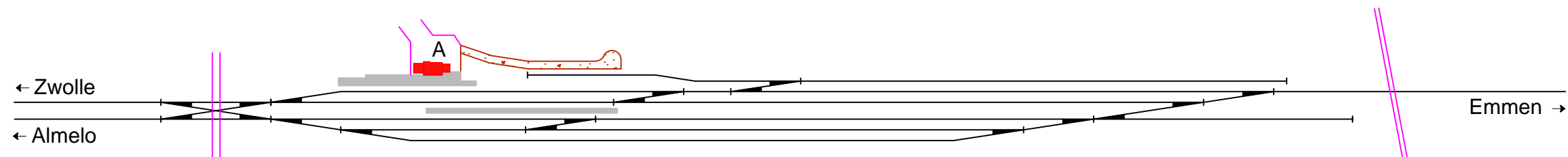


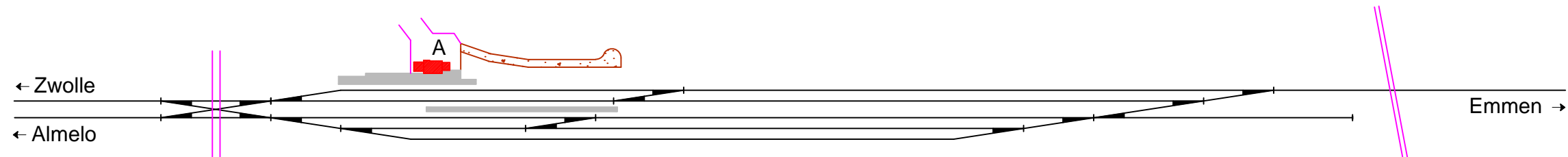
PRODUCED BY AN AUTODESK EDUCATIONAL PRODUCT
 Noordoosterlocaalspoorweg-Maatschappij



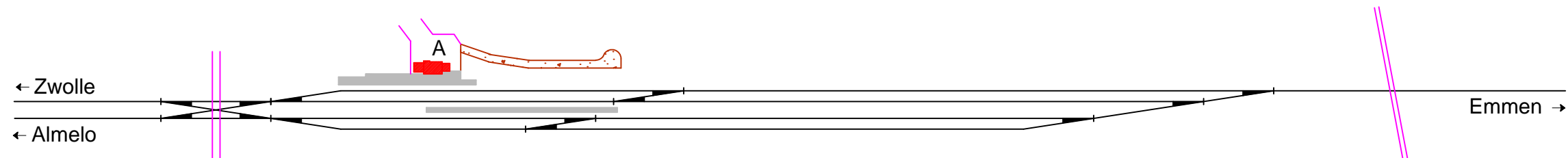
1959 - 1965



1965 - 1968



1968 - 1969



1969 - 1974

Legenda 1		Gegevens	
A:	Stationsgebouw	Spoorlijn:	Zwolle - Coevorden
B:	Nevengebouw	Afkorting:	Mrb
C:	-	Positie:	km 33,900, linkerzijde
D:	-		
E:	-		

Legenda 2	
—	Spoorlijn
—	Gebouw
—	Perron
—	Losweg
—	Water

Emplacement station Mariënberg, schematisch 03

A3

Schaal:	Niet op schaal	Revisie:	Versie S4.00
Datum:	2016-06-29		
Nadruk verboden			

R.E. van Wissen, Nootdorp

PRODUCED BY AN AUTODESK EDUCATIONAL PRODUCT

PRODUCED BY AN AUTODESK EDUCATIONAL PRODUCT

PRODUCED BY AN AUTODESK EDUCATIONAL PRODUCT