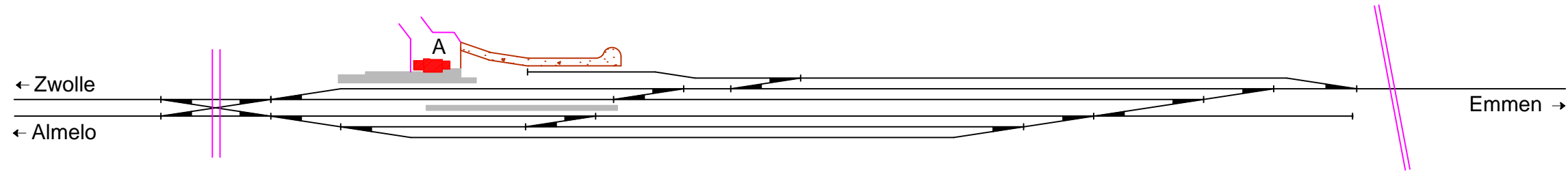
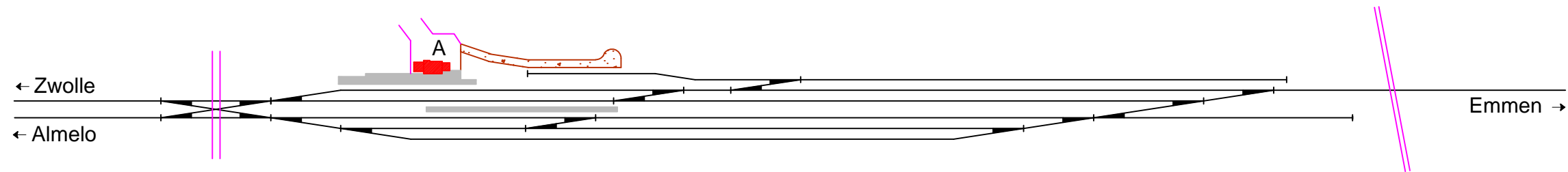


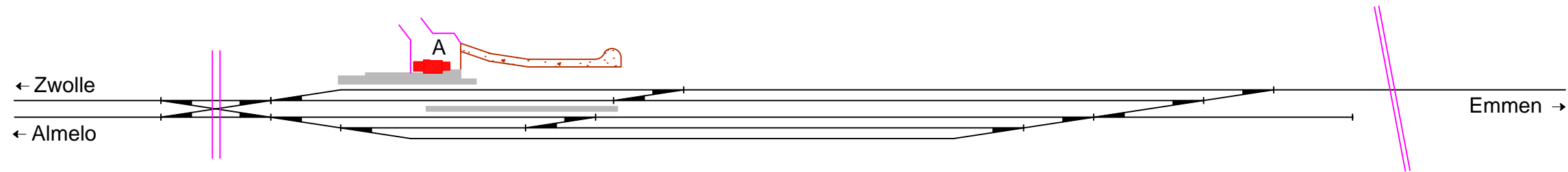
PRODUCED BY AN AUTODESK EDUCATIONAL PRODUCT  
 Noordoosterlocaalspoorweg-Maatschappij



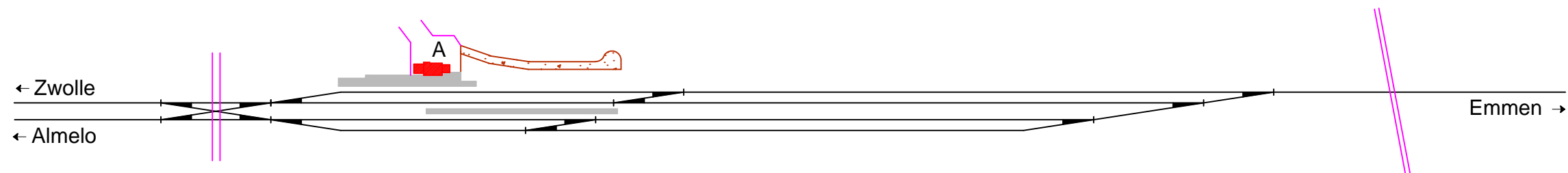
1959 - 1965



1965 - 1968



1968 - 1969



1969 - 1974

Legenda 1		Gegevens	
A:	Stationsgebouw	Spoorlijn:	Zwolle - Coevorden
B:	Nevengebouw		Mariënberg - Almelo
C:	Locomotiefloods	Afkorting:	Mrb
D:	-	Positie:	km 33,900, linkerzijde
E:	-		km 0,000, rechterzijde

Legenda 2	
—	Spoorlijn
—	Gebouw
—	Perron
—	Losweg
—	Water

Emplacement station Mariënberg, schematisch 03

**A3**

Schaal:	Niet op schaal	Revisie:	Versie S4.02
Datum:	2018-01-11		
Nadruk verboden			

R.E. van Wissen, Nootdorp

PRODUCED BY AN AUTODESK EDUCATIONAL PRODUCT

PRODUCED BY AN AUTODESK EDUCATIONAL PRODUCT

PRODUCED BY AN AUTODESK EDUCATIONAL PRODUCT